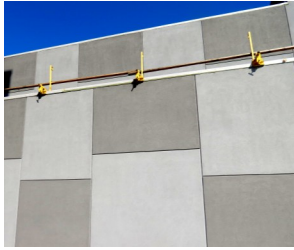




This is "Back Wrapping"

Must be installed at:

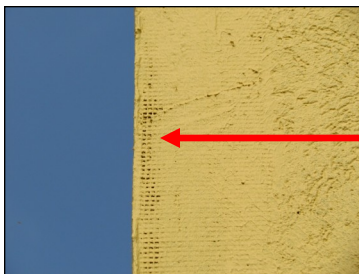
Openings
Penetrations
Light Fixtures
Edges
At Vinyl Trim



EIFS, when properly detailed and installed, will provide the Owner with a long lasting exterior cladding option. The specific EIFS manufacturer and EIMA (EIFS Industry Members Association) details must be followed in order to achieve, with proper Owner maintenance, a long lasting confident installation. Detailing is critical and we should always review job specific details with the installer prior to the start of installation.

Corey Zussman, AIA, NCARB - Director of Quality Management

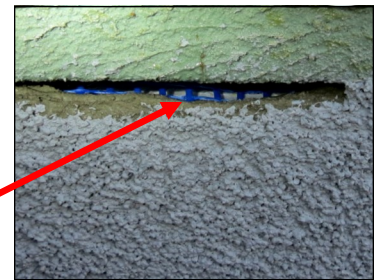
- ❑ ALWAYS REVIEW INSTALLATION PROCEDURES WITH the SUB at a **Pre-Installation Meeting**.
- ❑ Discuss cold & Hot weather Mfr requirements...Obtain a written plan prior to the start of installation.
- ❑ Make sure that the glue tracks ALWAYS run up and down to facilitate proper drainage.
- ❑ **BACK WRAP ALL EDGES (Mesh and base coat)** - See diagram to the left...



- ❑ The mesh should always be fully coated and not visible.

The base coat is not properly covering the mesh

This edge is not properly back wrapped...as the mesh is visible.



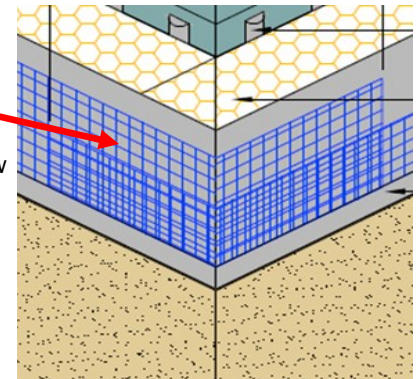
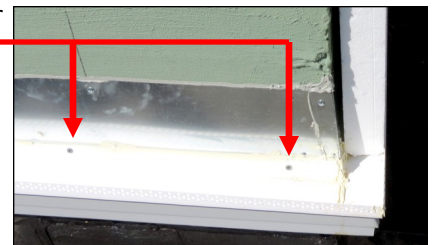
- ❑ Verify that EIFS is not being installed below grade.
- ❑ Review horizontal surfaces. EIFS requires a minimum slope of 1:2 – Verify w/ Mfr.
- ❑ Never allow adhesives or base coats fill the joints in the EPS (Insulation).
- ❑ Review sealant specifications and follow Mfr requirements (they sometimes require a specific primer)...review previous Pepper Technical Bulletin on Sealant & EIFS.
- ❑ Review sealant joints to be installed...look out for fillet joints, which would require that the finish coat be held back for proper sealant adhesion.
- ❑ Never use open cell backer rod with EIFS.
(Open backer rod is sometimes called "Denver Foam"...it is typically yellow in color.)

- ❑ Make sure that the flashing system at the bottom has proper weep holes.

- ❑ Discuss making sure that the joints of the insulation DO NOT align with the joints in the sheathing.
- ❑ Discuss making sure finish coat is NOT being installed under locations where sealant is installed.
- ❑ If using vinyl trim accessories, review manufacturer requirements for EIFS installation.

- ❑ The insulation board must be butted tightly. Any gap larger than 1/16" shall be filled with low expandable foam or per Mfr requirements.

- ❑ Outside corners typically should have 8" minimum overlapping mesh.



- ❑ This window has pre-back wrapped edges around the window opening... which is very efficient.

- ❑ EIFS itself does not need expansion joints...expansion joints are needed if EIFS adjoins a dissimilar material, change in plane, floor lines, and substrate changes.



Base coat is improperly in the joints.



This pipe was NOT properly back wrapped



This electrical box was properly back wrapped

